

The World Leader in Robotic Tank Inspections



Eliminating Confined Space Entry while
providing API 653 & EMMUA 159 Compliant Tank Inspections

ROBOT LAUNCH AND RECOVERY

Roof Launch Deployment



Side Launch Deployment



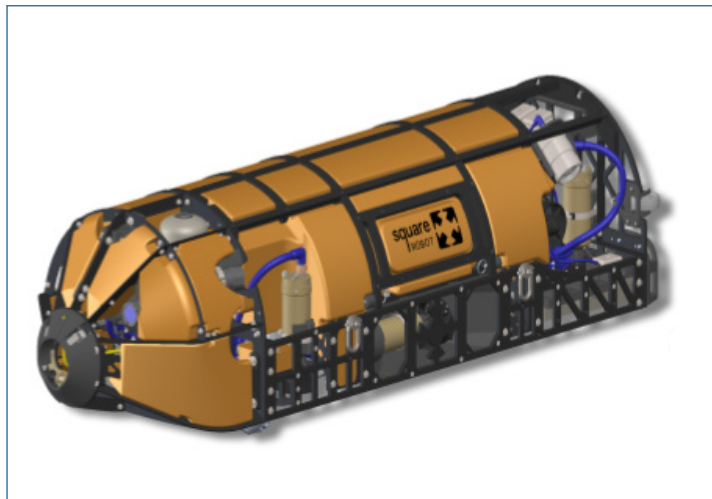
Ready to make your above-ground storage tank inspection program more efficient and compliant? Contact our team of experts: info@squarerobot.com

Houston: +1 (281) 569-4949, Boston: +1 (617) 274-8389

The World Leader in Robotic Tank Inspections



Square Robot's Tank Inspection Capabilities

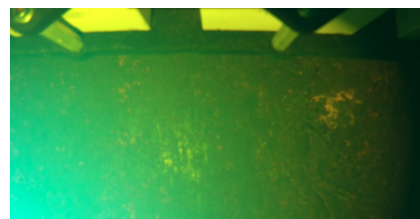
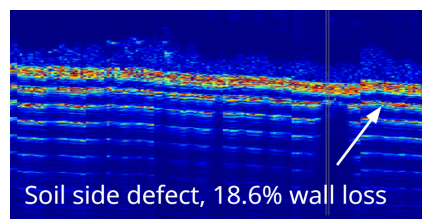
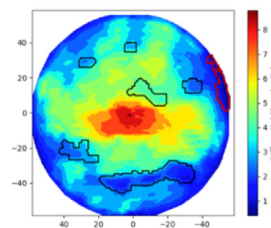
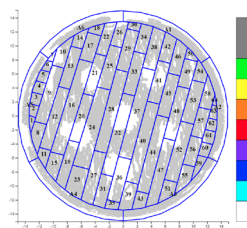


Applications

Launch/Recovery Method	Side Shell or Roof Launch
Communications	Fiber Optic Tethered
Tank Type	Fixed, External or Internal Floating Roof
Product Compatibility	Low/High Flashpoint Products
PAUT Bottom/Coating Thickness	● Active
Bottom Settlement Under Load	● Active
Visuals of Bottom, Shell, Internals	● Active
Extreme Value Analysis	● Active
Fiberglass Liner	● Active
Internal Roof Seal Inspection	● In Development
Sediment Thickness Mapping	● In Development

BENEFITS:

- **Capital and Operational Efficiency:** Tanks remain online during internal inspections.
- **API 653 / EMMUA 159 Compliance:** Inspector recommendations backed by NDT data.
- **Tank Bottom Inspection:** 256 element phased array UT for volumetric wall loss measurements within 0.5in (13 mm) of tank walls and obstructions.
- **Risk Management:** In-service high-density UT, visual and settlement data for informed decision-making.
- **Health and Safety:** Contain emissions and eliminate confined space entry.



Ready to make your above-ground storage tank inspection program more efficient and compliant? Contact our team of experts: info@squarerobot.com

Houston: +1 (281) 569-4949, Boston: +1 (617) 274-8389