

Side Launcher Skid System

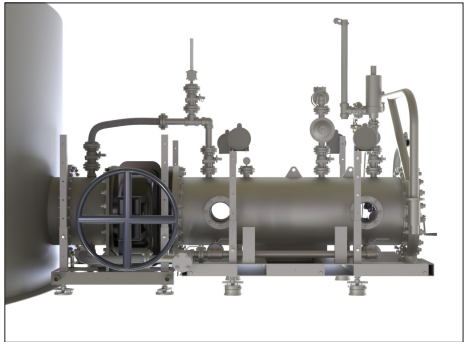
Square Robot’s patented Side Launcher System enables safe and efficient on-stream robotic tank inspections when robot launch and recovery access through a roof manway is not preferred due to product flash point or internal floating roof deck access.

Square Robot’s Side Launcher System consists of two primary elements:

- Square Robot Side Launcher - Manway Adapter Valve (SRSL-MAV)
- Square Robot Side Launcher - Vehicle Chamber (SRSL-VC)

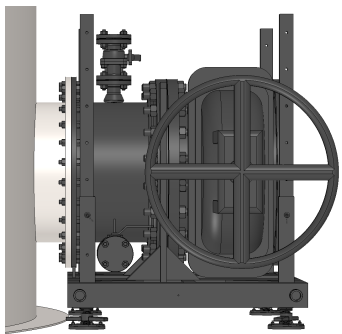
Manway Adapter SRSL-MAV

- A skidded manway adaptor, 24” full opening gate valve, and blind flange system that can be installed at your convenience before Square Robot’s inspection or other tank operation.
- Square Robot offers this system for sale or rent to support a variety of manway sizes and requirements.



SRSL-MAV2424

SRSL-VC



MANWAY ADAPTER SRSL-MAV SPECIFICATION

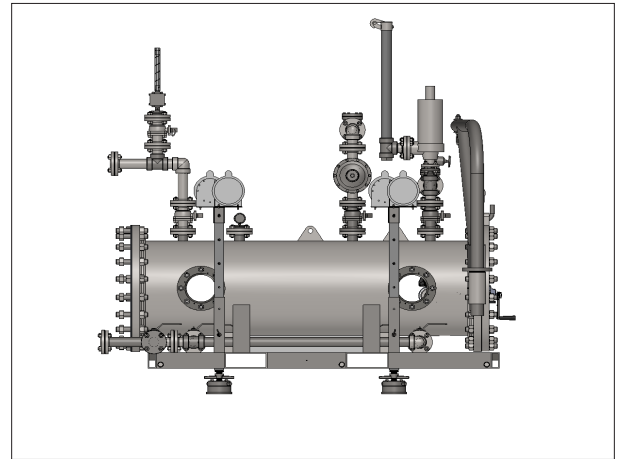
SRSL-MAV2424 SKID PACKAGE				
	SKID SYSTEM	MANWAY ADAPTER	VALVE	BLIND FLANGE
DESCRIPTION	ASSEMBLY WELDMENT WITH ADJUSTABLE HEIGHT; LIFT EYE AND FORK TRUCK POCKETS	24”, API 650 MANWAY TO ASME CLASS 150 WITH 2” OUTLETS	API 600, ASME CLASS 150, NPS 24”. FLANGE IAW ASME B16.5	24” CLASS 150 BLIND FLANGE WITH VENT VALVE
WEIGHT	870 LB (395 KG)	442 LB (200 KG)	2960 LB(1342 KG)	420 LB (190KG)
LENGTH	46.8 IN (1.2M)	16.25 IN (.41M)	20.1 IN (.51M)	9.6 IN (.24M)
HEIGHT	51.4 IN (1.3M)	32.75 IN (.83M)	32.0 IN (.81M)	35 IN (.89M)
WIDTH	80.5 IN (2.0M)	32.75 IN (.83M)	131.0 IN (3.33M)	32 IN (.81M)
VENT, DRAIN, EQUALIZATION VALVES		ASME CLASS 150, NPS 2 IAW ASME B16.5		ASME CLASS 150, NPS 2 IAW ASME B16.5
GASKETS		GARLOCK 3000 ARAMID FIBER WITH NITRILE BINDER OR OTHER GASKET APPROVED FOR OPERATING FLUID		

Standard Size & API Bolt Patterns: • SRSL-MAV2424 • SRSL-MAV3024 • SRSL-MAV3624

***Note:** Customization available upon request

VEHICLE CHAMBER SRSL-VC

- A skidded vehicle chamber system that enables Square Robot to safely and efficiently launch and recover its SR-3 robot for inspection operations.
- Offered only as a rental system.
- Typically installed and removed at the time of robotic inspection.



VEHICLE CHAMBER SRSL-VC SPECIFICATION

SRSL - VC SKID PACKAGE	
DIMENSIONS	90 IN X 24 IN Diameter
WEIGHT	Empty: 3500 LBS (1130 KG) Filled: 4750 LBS (1700 KG)
SHELL MANWAY ROUND CLEARANCE	20.9 IN Minimum to Manway Center
PRESSURE RATING	150 PSIG
TEMPERATURE RATING	-13°F to 131°F (-25° C to 55° C)

Key Features:

- Patented Factory Mutual Class 1 Division 1 certified system and process
- Designed to ASME B31.3 & ASME B31.4
- Robust, skidded system design with adjustable leg height and cribbing locations
- Easy transport and lifting with both pad-eye and forklift pocket options
- Standard API 24", 30", 36" manway interface - other sizes, configurations available
- Standard ASME 24" Class 150 lockable valve and vehicle chamber interface
- Standard ASME 2" Class 150 lockable valves for vent, drain, and equalization

Contact our team of experts for pricing details: info@squarerobot.com

Houston: +1 (281) 569-4949 **Boston:** +1 (617) 274-8389



Ready to make your above-ground storage tank inspection program more efficient and compliant? Contact our team of experts: info@squarerobot.com

Houston: +1 (281) 569-4949, **Boston:** +1 (617) 274-8389